

Compassionate support when you need it most



Why choose Nurseplus Care at home?

Managing the challenges of ageing or health conditions while keeping your independence at home can be daunting. Moving into a residential facility may feel inevitable. But it doesn't have to be.

We have been recruiting and training carers since 2005 so you can rest assured that you will be in safe hands. Our care is focused on enabling you to live an independent and fulfilling life in the safety and comfort of your own home.



A dedicated team, created just for you

Our experience means that we can create the right team for you. Whilst we match based on required skills and clinical need for those requiring medical support, we also take into account your likes and dislikes, hobbies and interests too. We understand how important forming meaningful relationships is for your mental health and overall wellbeing and that's why our caregivers are handpicked just for you.

We are dedicated to providing care that is truly unique to you. We understand that no two people are the same, so our care plans are entirely bespoke, and outcome focused if required. This means that your carers will help you to work towards things you would like to achieve.



Reliable care, local to you

Whilst we operate Care at home branches across England, each client receives a locally managed service, ensuring the highest levels of support and monitoring. As part of our premium service, your support plan will be led by an experienced Registered Manager and delivered by carers who have been trained in-house by our team of expert healthcare trainers.



A responsive and flexible service, tailored to your needs

We understand that the need for care can be unexpected or that changes in circumstances can mean that elements of a care plan need to be changed quickly. Our expert teams can have a care plan in place in as little as 24 hours, sometimes sooner. We work with you and your family to ensure that you have a completely tailored plan in place with the right care team, exactly when you need it.



The reassurance of a fully regulated service

We promise the highest level of care and support. We are fully regulated by the Care Quality Commission (CQC) in England and our local branches have been recognised as 'Outstanding' and 'Good,' assuring you of the exceptional quality of our services.

Ways we can help you

The flexibility of Care at home and one-to-one support is designed to enable you to live safely and independently in the comfort of your own home. From daily or weekly visits through to live-in care, our tailored homecare packages and trusted carers offer extra support and reassurance when you need it most.

Our dedicated Carers and Registered Nurses can support you with a wide variety of tasks, including:

- › Assistance with daily routines
- › Assistance with washing and dressing
- › Meal preparation and feeding
- › Personal hygiene
- › General housekeeping
- › Taking care of pets
- › Administering or prompting medication
- › Assistance with shopping and accompanying you to appointments
- › Planning and accompanying you on days outs or longer trips
- › Accompanying you to social events
- › Monitoring your wellbeing overnight
- › PEG Feeding
- › Tracheostomy care
- › Wound dressing

We can also provide specialist support, including:

- › Dementia care
- › Specialist children's support from 4 years
- › Pre and post-operative care
- › Mental Health Support
- › Palliative care
- › Rehabilitation support
- › Learning Disability care
- › Brain and Spinal Injury care
- › Parkinson's care

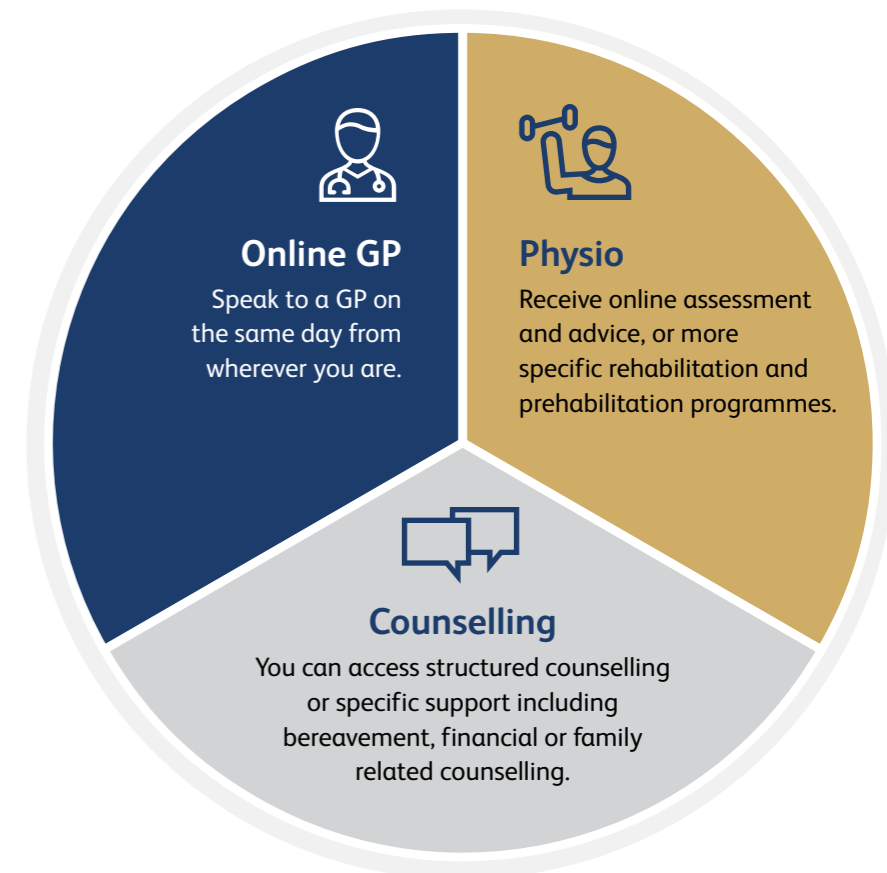
Additional healthcare services at your fingertips.

At Nurseplus Care at home we strive to ensure that our clients have all the support they need.

That's why we created Nurseplus Connect!

Nurseplus Connect aims to make healthcare services more accessible to you, with each and every one of our clients having access to a number of additional benefits included as part of their Care at home package.

What is included as part of Nurseplus Connect?



Is there an additional cost associated with Nurseplus Connect?

No. Nurseplus Connect comes free within your Nurseplus Care at home service.

When will I be able to access my Nurseplus Connect services?

Your Nurseplus Connect services will be available to use as soon as your care plan starts.





Visiting Homecare

Visiting care at home gives you the support you want, when you need it most. With regular or ad-hoc support from as little as two hours a week to visits everyday, our visiting homecare service is completely tailored to your needs.

“Nurseplus were brilliant at dealing with a range of ‘emergencies’ calmly and competently in looking after my parents, one of whom could be challenging. Living so far away it was always a comfort to know they could deal with things that arose.”

Our goal is to enable you to continue living independently in the comfort of your own home, doing all the things you enjoy.

Unlike residential care, visiting care at home is a flexible solution carried out in your own home, to your own timetable. It allows you to have the support you need without the disruption of moving into a care or nursing home. Our visiting care service is ideal for individuals of all ages who require support with various activities; whether its personal care, companionship, or specialised care for specific conditions, our dedicated team is here to assist.

Visiting care is also completely unique to your needs and requirements – if there are certain aspects of your care that you prefer to do yourself, like showering or personal care for example, our carers will always respect your choice and independence. Visiting care can also be adapted should you find you need more help with specific tasks or if your needs are becoming more advanced.

At Nurseplus Care at home, we stipulate a minimum of two hours for each visit, so our carers are not compromised by time restrictions. We have the ability to carry out a number of different activities, whether it be a trip to the shops or helping with hoovering followed by a cup of tea and a chat.

Tailored support to fit your needs



Companionship and Welfare Checks

A regular friendly face can provide much-needed support to those that might be feeling lonely or isolated. Our companion carers can provide a friendly visit over a cup of tea and conversation, help with the shopping or offer friendly company on fun days out, as well as escorting you to appointments to ensure you never feel alone.

Dementia Care

At Nurseplus Care at home, we understand the unique challenges faced by individuals living with dementia and their families. Our specialised dementia care services are thoughtfully designed to provide compassionate support, enhance quality of life, and promote a sense of well-being. With a focus on dignity, safety, and maintaining familiarity, we aim to create a comfortable and nurturing environment that fosters independence while providing essential assistance. We’re here to offer peace of mind and a reassuring presence during this journey.

Overnight Care

If the stresses and strains of looking after a loved one at night are getting too much, Nurseplus Care at home can help. Choose from our comprehensive range of night care options to suit your specific needs. Our dedicated carers are available for both sleeping and waking nights, providing support that ranges from assisting with night-time routines, ensuring comfort, administering medication, to being readily available in case of any emergencies. Whether you require occasional respite care or a regular night support plan, our services are fully customisable to ensure they match your unique requirements.

Specialist Children’s Services

Our support packages allow children and young people to remain in their familiar surroundings while receiving specialised care for learning difficulties, challenging behaviours, physical disabilities, OCD, and non-verbal communication. Our experienced team is dedicated to promoting independence, emotional well-being, and a fulfilling life. We also provide companion services for children, whether you need help with the school runs and join you for extra support on family days out – Nurseplus Care at home can cover it all!

“The provision has been professional and seamless, from initial consultation through to developing the care plan as well as the support and daily updates provided. The carers are a great match for our child and so helpful, using their initiative, keeping the environment clean and tidy and being responsive and proactive during the day. We have felt very confident with the care that has been put in place.”





Live-in care

Our live-in care service is designed to offer one-to-one support to enable you to live safely at home surrounded by familiar comforts and routines, whilst giving you peace of mind that there is always a friendly face around to help you whenever needed.

Live-in care is a welcomed alternative to residential care. With minimal disruption to your existing routines, it allows you to stay close to friends, keep pets, and maintain all of your hobbies.

Feel fully supported with Live-in care

Our live-in care service provides you and your loved ones with all the support you need – we can even help care for your pets! We will provide you with a dedicated live-in carer who will offer you around-the-clock support in accordance with your needs, preferences and wishes.

At Nurseplus Care at home, we strive to match every client with a carer they can really connect with, so we will work with you and your loved ones to find a carer who will suit your personality and lifestyle so you can genuinely enjoy your time together.

With our live-in care services we are responsible for all aspects of your care, so you will have support from our live-in care team seven days a week.

How does live-in care differ from a care home?



We believe that live-in care is an excellent alternative to moving into a care home. It can be more practical and affordable, whilst enabling you to maintain your independence which cannot be guaranteed in a busy care home. We have listed some of the main differences between live-in care and a care home below.

Live-in Care	Care Home
There's no need to move – stay in the familiarity and comfort of your own home	An unfamiliar environment in which you may be restricted on the amount of belongings you can take
No restrictions around seeing family, friends or your pets	There are often visiting hours in place
Dedicated one-to-one support, with a carer matched to your needs	There is often one carer supporting multiple residents at any given time
Fits around your routines and lifestyle	Routines are set for you based on the number of carers available
Less risk of infection and hospital admission	Higher chances of infection or viruses like Covid-19 from exposure to staff, residents and their visitors



“The live-in carers we have are brilliant, I get on with them very well and they're very honest. I've always made it clear that we live and work as a team here and I hope they do feel that I support them. Having this support from Nurseplus Care at home has given us much more stability and I am less anxious about my husbands' care. I feel safe with them and I am confident that my husband has that sense of stability with his ever-changing needs.”

Wife of a client receiving live-in dementia care





Respite care

Caring for a family member can be hard and taking time for you is imperative to being able to provide great care for others.

At Nurseplus Care at home, we understand that every caregiver needs a well-earned break, and that's where respite care comes in.



Respite care is a temporary, short-term solution designed to provide relief for primary caregivers. It's an opportunity to recharge and take some time for yourself while ensuring your loved one continues to receive the care they need. Whether you need a few hours, days, or more, we tailor our respite care to suit your individual requirements.

Our approach to respite care is all about flexibility and personalisation. We work closely with you and your loved one to create a bespoke care plan that caters to the unique needs and preferences of your loved one. This means you can enjoy your break with confidence, knowing that our compassionate and qualified carers are delivering the same level of care and support you would provide.

Respite care can also be a good opportunity for families to trial live-in care as a long-term option; this is a good way for you and your family to get to grips with the physical and emotional considerations of a live-in care arrangement. This gives everyone involved the opportunity to ask questions about the process and really understand how it would work for you.

STEP 01



Contact us

If you would like more information about the services we offer and how these can be tailored to your needs, simply get in touch with our friendly team on **08000 622 622**. Alternatively you can enquire via our website and a member of the team will be in touch with you as soon as possible.

STEP 02



Free Home Assessment

After speaking to our team, if you feel that we can meet your needs, we will arrange a free, no-obligation home assessment at a time convenient for you. Your care managers will meet with you at your home to discuss your requirements and understand the outcomes you would like to achieve. We will take our time to get to know you on a personal level as well as your support needs in order to build a care plan that is completely tailored to you.

STEP 03



Free Care Plan

From here, your local care manager will pull together a bespoke care plan for you along with some carer profiles of carers they believe will not only be able to deliver the care you require, but also that you will get along with on a personal level. We will work with you until your care and support plan is just right!

STEP 04



Starting your care plan

Once you are confident that you are happy with all the details and agreed costs, we will arrange a date for your care plan to begin. We can commence care within 24 hours, depending on availability.

We always ensure that a member of your local branch team accompanies your carer/s on their first visit to formally introduce them and so that you feel comfortable. They will also provide you with details for our Nurseplus Connect service and show you how to access the additional healthcare services available to you.

Contact us

If you would like more information about the services we offer and how these can be tailored to your needs, simply get in touch with our friendly team on:

 **08000 622 622**

Or visit on website:

www.nursepluscareathome.com